

Public Information Supplied by:

**BUTTE COUNTY MOSQUITO
AND
VECTOR CONTROL DISTRICT**

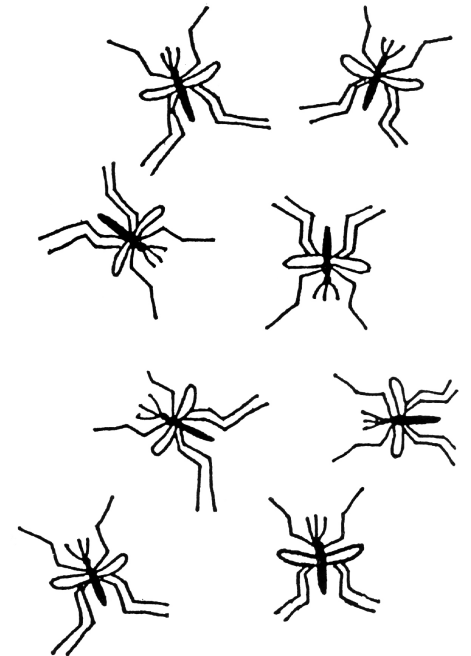
5117 Larkin Road
Oroville, California 95965-9250

From Chico/Paradise
Phone: 342-7350

From Biggs/Gridley/Oroville/Richvale
Phone: 533-6038

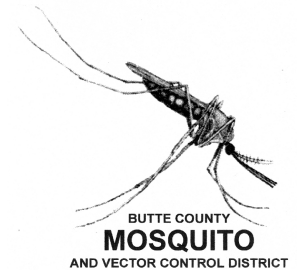
Fax: 534-9916

Early Spring Mosquitoes



A
Public
Service
From...

Early Spring



Mosquitoes

During the warm days of early spring (mainly February and March) Butte County Mosquito and Vector Control District receives numerous calls from people who are being plagued by mosquitoes.

The mosquito causing the largest amount of annoyance is the “Malaria Mosquito” *Anopheles freeborni*.

These mosquitoes often appear during the day and early evening when temperatures reach 68° . Adult females have a faint, brown-colored body and spotted wings.

The adult *Anopheles* mosquito goes through behavioral phases in its life cycle after emerging from rice fields and wetlands located throughout Butte County.

The first phase occurs in August and September when the mosquito is actively feeding on people and domestic animals.

Phase two involves a fall migration from mosquito-breeding areas into residential areas during late September and October.

At this time mated females are searching for suitable places to hibernate, such as underneath houses, rodent burrows, dog houses, culverts, and under bridges.

Once suitable quarters are located, the mosquito becomes inactive and hibernates. On warm days (usually 68° or more) adults become active causing problems in localized areas.

If you have a problem with these mosquitoes, you can protect yourself by using repellents and wearing clothing that covers exposed skin.

Doors and windows should also be screened to prevent the flying pests from entering homes.

Commercial aerosol sprays are available to kill mosquitoes that may have entered a home or business building.

The District periodically conducts area-wide treatments when large numbers of mosquitoes are active and weather conditions are suitable.

The “adulticide” is applied using specialized equipment to produce an aerosol fog which quickly reduces adult mosquito populations.

